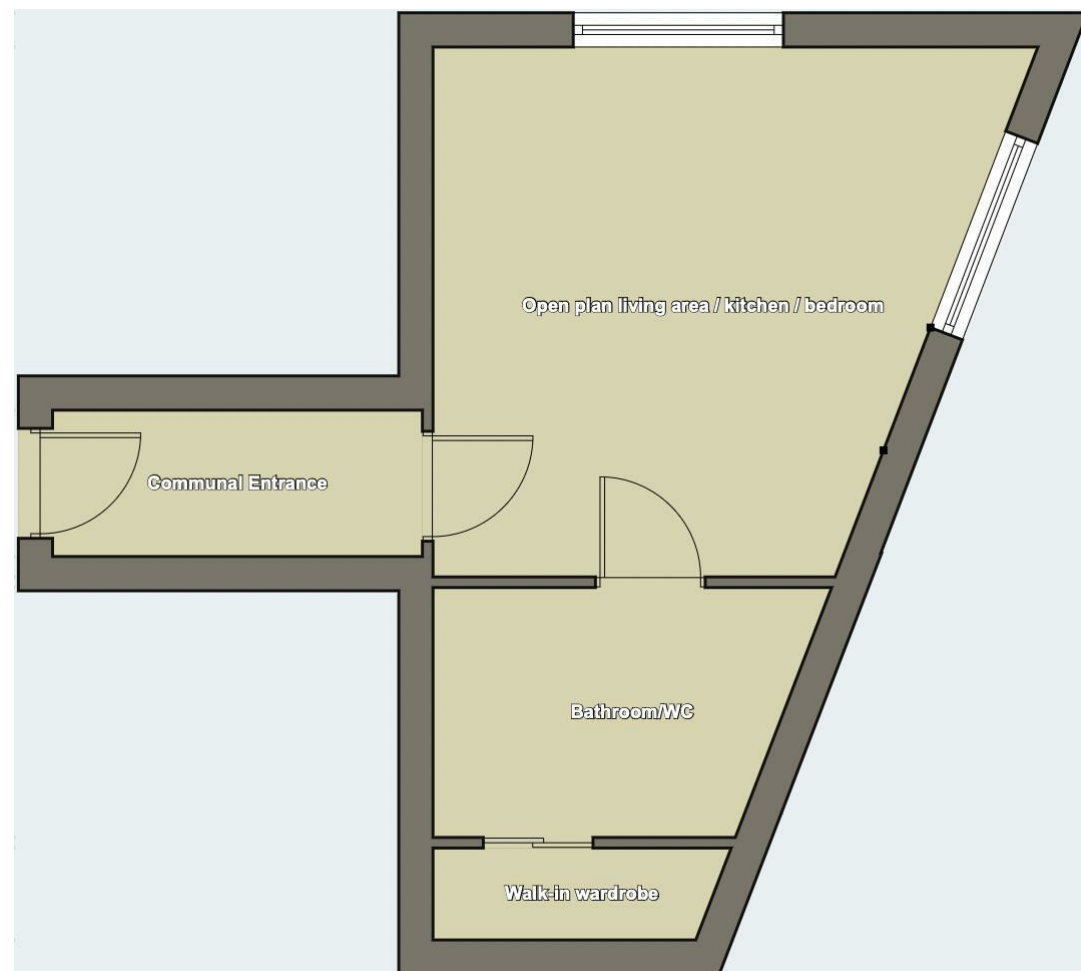




Viewings
Viewings by arrangement only.
Call 0114 483 0038 to make an appointment.

Vendors Comments
Add text here

Energy Efficiency Rating		Current	Potential
Very energy efficient - lower running costs			
(92 plus) A			
(81-91) B			
(69-80) C			
(55-68) D		68	74
(39-54) E			
(21-38) F			
(1-20) G			
Not energy efficient - higher running costs			
England & Wales		EU Directive 2002/91/EC	



317b Upperthorpe, Sheffield, S6 3NG

£650 Per month

- Gas and electricity bills included in the rent
- Extremely well presented throughout
- Ideal for a professional couple
- Viewing highly recommended
- Ground floor, studio apartment
- Very modern kitchen & bathroom
- Highly sought after residential area
- EPC Grade D

317b Upperthorpe, Sheffield S6 3NG

*** GAS and ELECTRICITY BILLS INCLUDED IN THE RENT ***

A STUNNING, ground floor studio apartment, which truly needs to be viewed to be fully appreciated.

Extremely WELL PRESENTED throughout with a VERY MODERN KITCHEN AND BATHROOM.

Situated in a highly sought after residential area, ideal for a professional couple and conveniently located for a host of local amenities.

In brief the accommodation comprises: communal entrance hall, open plan living room / kitchen / bedroom, bathroom/WC and a walk-in wardrobe.

An early viewing is highly recommended to avoid disappointment!

EPC Grade D.



Council Tax Band: A

